

Missouri Environmental Emergency Response (EER)

Skip Ricketts

State on-scene coordinator, St. Louis area

March 5, 2018

AIHA & ASSE Professional Development
Conference

Overview of Presentation

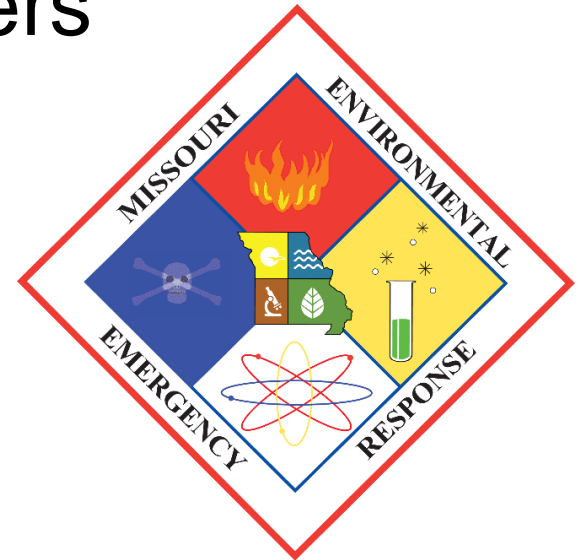
- Description and responsibilities of EER
 - Spill Bill
 - Duty officers and state on-scene coordinators
- Duties related to spills/releases of hazardous substances
- Additional duties
- Types of incidents

What is EER?

The department's front line of defense against

- Significant releases of hazardous substances
- Natural and man-made disasters
- Threats to homeland security

dnr.mo.gov/env/esp/esp-eer.htm





MISSOURI
DEPARTMENT OF
NATURAL RESOURCES

Petroleum Spills



June 2008 – Jefferson County

24-Hour EER Spill Line

An estimated 1,500 reports per year
– Mostly from firefighters but anyone may call

573-634-2436

Duty officers:

- * Give technical help.
- * Contact agencies.
- * Dispatch EER state on-scene coordinators, if necessary.



Mo. Spill Bill Gives EER its Authority

- Responsible parties must report releases of hazardous substances to spill line
- EER addresses the release of any substance that may impact public safety and health as well as the environment
 - Releases onto land and/or water
 - Releases into the atmosphere



MISSOURI
DEPARTMENT OF
NATURAL RESOURCES

Chemical Spills, Fires



June 2014 – I-55 N in Mehlville

State On-Scene Coordinators

- First priority: Ensure safety of people
- Stabilize situation to minimize impact
- Contain releases and protect land, air, waterways
- ID chemicals and identify properties, behaviors
- ID responsible party
- Oversee cleanup – Is it complete?
- Assist with cost recovery

Response Partners

- Fire departments
- Law enforcement
- Mo. State Water, Highway patrols
- HazMat team(s)
- Health departments
- Towing companies
- U.S. Food and Drug Administration
- U.S. Chemical Safety Board
- EPA
- FBI
- Mo. National Guard 7th Civil Support Team
- Bomb squads
- U.S. Coast Guard
- MoDNR's Geologic Survey Division
- Environmental cleanup contractors
- MoDNR and EPA criminal units
- Mo. Department of Transportation



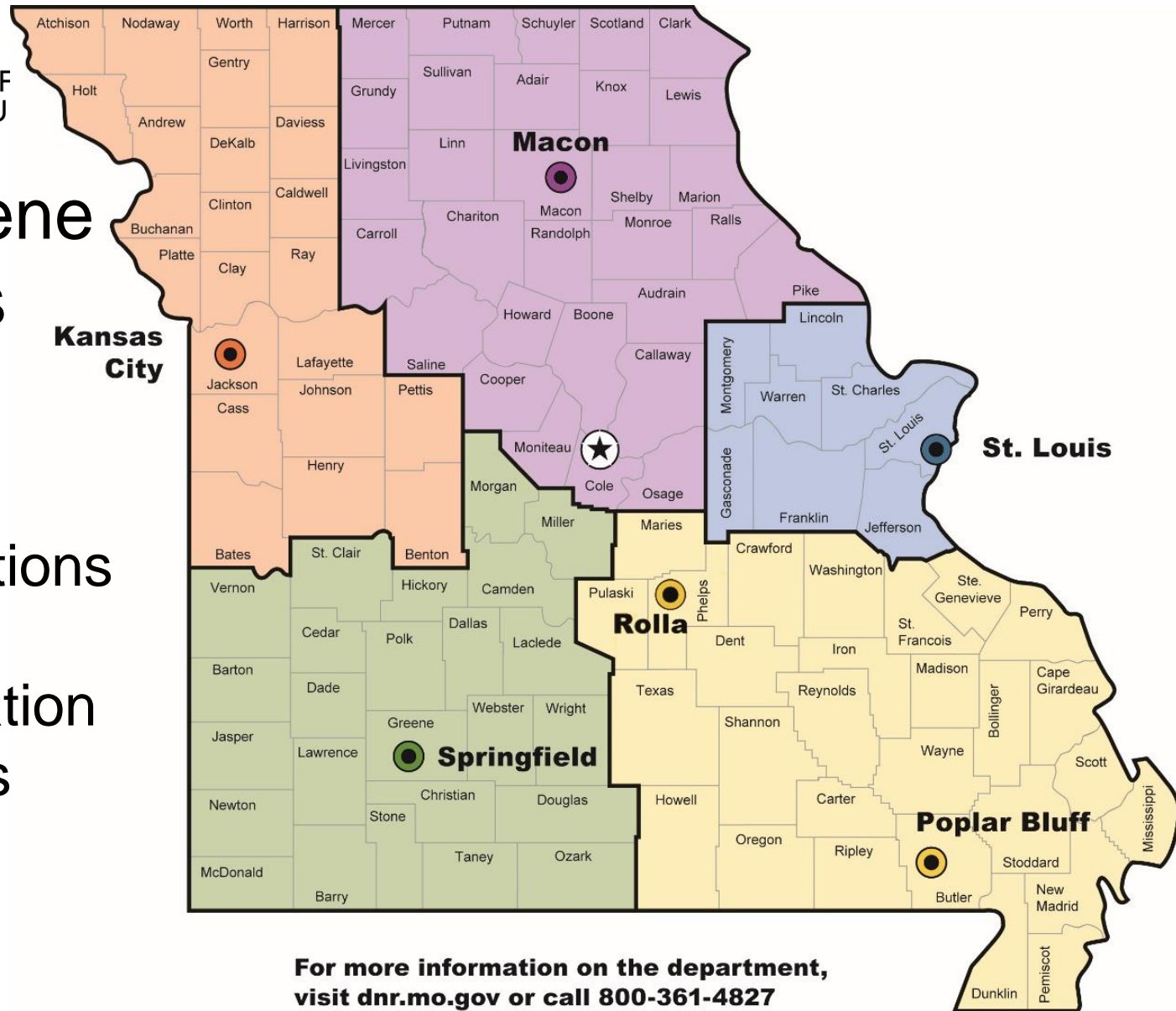
MISSOURI
DEPARTMENT OF
NATURAL RESOURCES



Training with
the Missouri
State Water
Patrol.

State on-scene coordinators

- Respond to emergencies from six locations
- Earn certification as hazardous material technicians.



Fuel Containment



Truck drove off bridge into Mattis Creek, St. Louis County. EER helped protect waterway from release of gasoline.

Hazardous Substance Emergencies

How to define?

- Petroleum releases
 - More than 50 gallons for liquids or 300 cubic feet for gasses
 - 25 gallons or more from underground storage tank
- Releases of substances, according to:
 - CERCLA
 - State RCRA permit requirements
 - U.S. Dept. of Transportation
 - Clean Air Act
 - Clean Water Act: any oil released to a waterway producing a sheen or more serious situation

Cost Recovery

- Agencies that respond to emergencies involving hazardous substances can recover cleanup costs.
- MoDNR fact sheet with price guide
dnr.mo.gov/pubs/pub2095.htm
- Standard of care – Emergency Response Guidebook
- Reasonable and necessary costs

Duties: Planning

- Cooperative efforts with St. Louis City, area counties
 - Response plans for Bridgeton
 - Emergency planning committees
- Cooperative efforts with EPA
 - Greater St. Louis Subarea Committee
 - Spill Response Plans for Mo. and Miss. rivers

Duties: Planning

- Exercise Planning
 - Marathon Cross Jurisdictional Functional Exercise
 - St. Louis Regional Intermodal Exercise
 - Westlake Landfill Table Top Exercise
- Training
 - Transportation Rail Incident Preparedness and Response Training

Duties: Collecting Samples

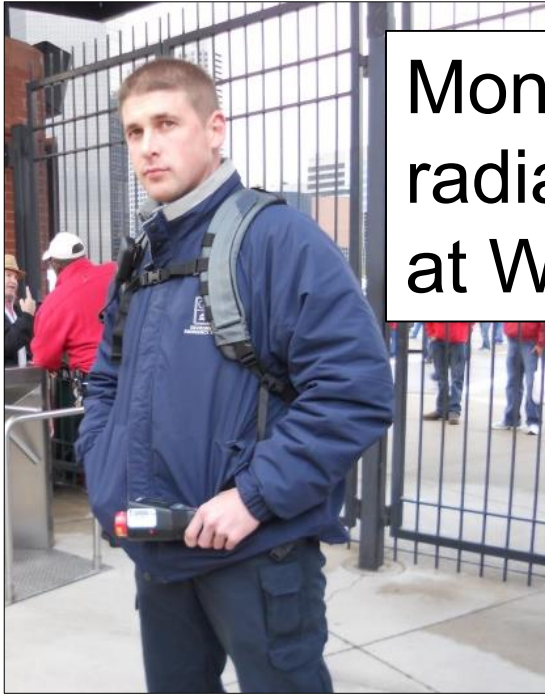
Collecting water
sample after fish
kill in Flat Creek,
Franklin County.





MISSOURI
DEPARTMENT OF
NATURAL RESOURCES

Duties: Special Events



Monitoring for
radiation
at World Series



Preparation
is key.



Security
efforts.



MISSOURI
DEPARTMENT OF
NATURAL RESOURCES

Petroleum Incidents



Trans
Canada
Pipeline

In St. Charles Co. –
MV Omaha





MISSOURI
DEPARTMENT OF
NATURAL RESOURCES

Petroleum Incidents



Improper
disposal

Vehicular
accident





MISSOURI
DEPARTMENT OF
NATURAL RESOURCES

Petroleum Incidents



From top left:

- Vehicular accident
- Operator error
- Mechanical failure

Abandoned Containers



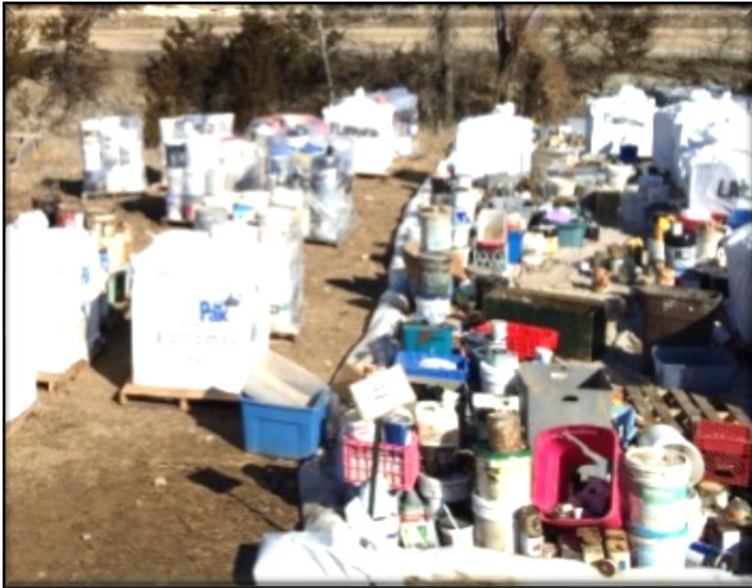
Most common:
Used motor oil

Hazmat –
criminal
investigation



Natural Disasters

Flooding of Meramec River



Removing debris
and recovering orphaned containers

Natural Disasters



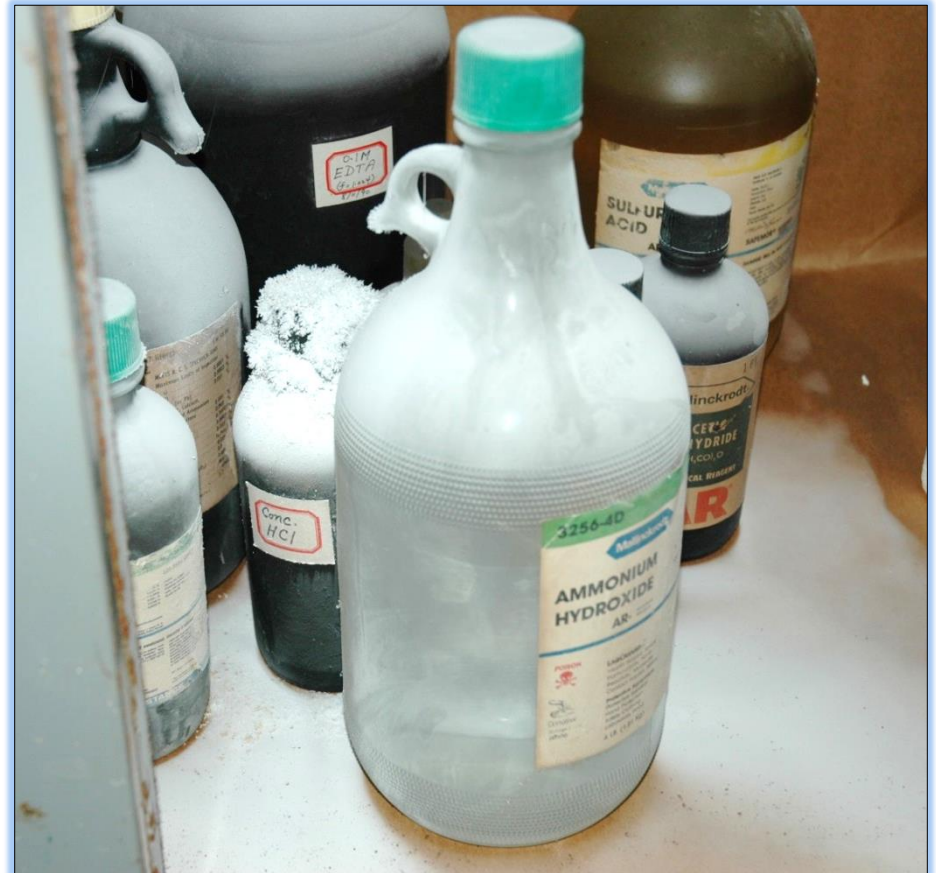
Tornado in Joplin

Request for Assistance/Scene Size-up

Accident waiting to happen:

- Leaking chemicals
- Strong acid beside base
- Firefighters called EER

November 2007



Mercury Spills



Broken mercury thermometers require extensive manpower to clean up

Explosives

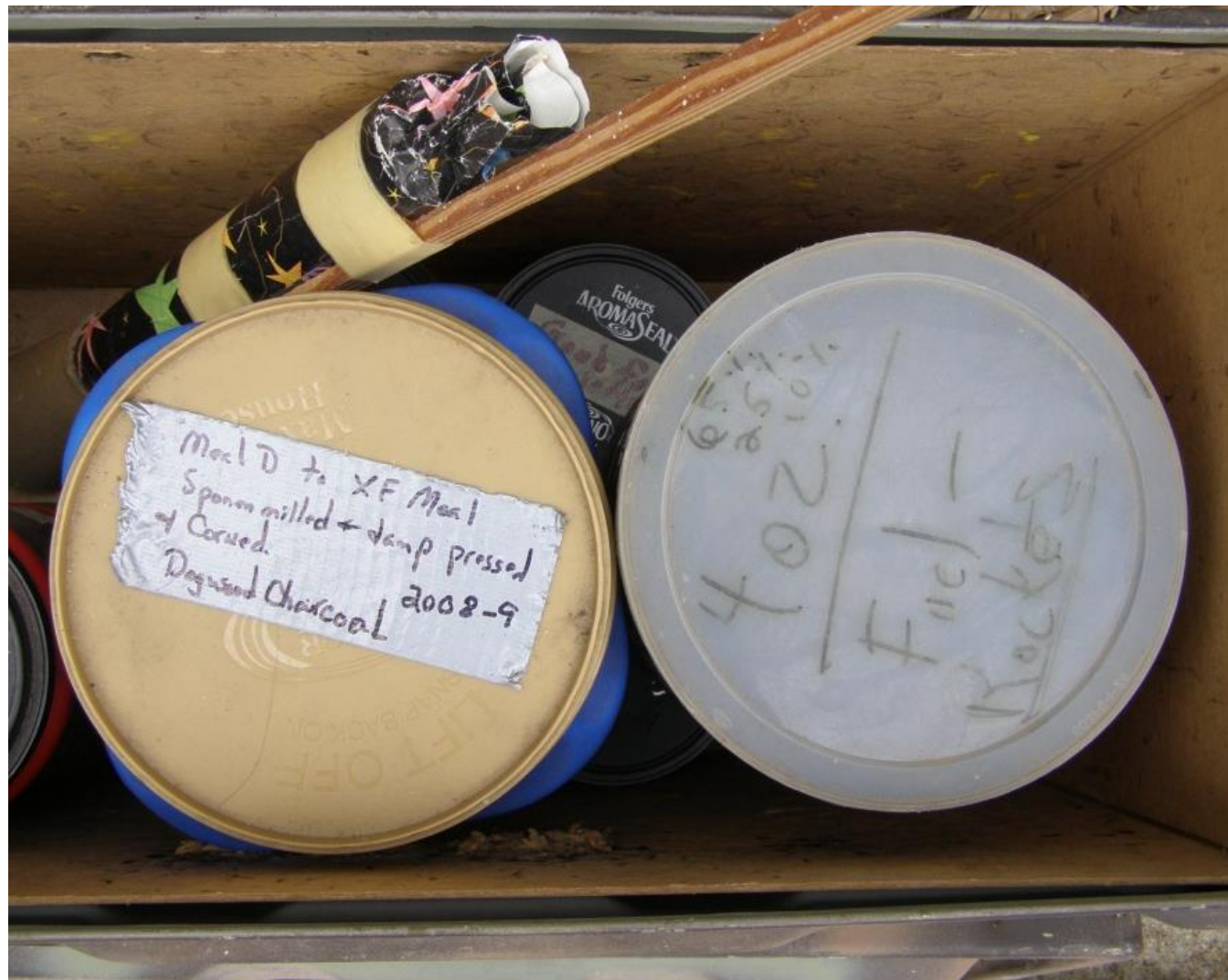


Can you
find
the
ignitables?



MISSOURI
DEPARTMENT OF
NATURAL RESOURCES

Explosives



In hard-to-
detect box
on floor

Fires/Explosions

Fire at the
Praxair plant,
St. Louis --

* Cylinders
launched,
striking cars,
buildings

* Several
small fires
erupted.





MISSOURI
DEPARTMENT OF
NATURAL RESOURCES

Fires/Explosion



Explosions at chemical plants
-- EER provides technical support to firefighters

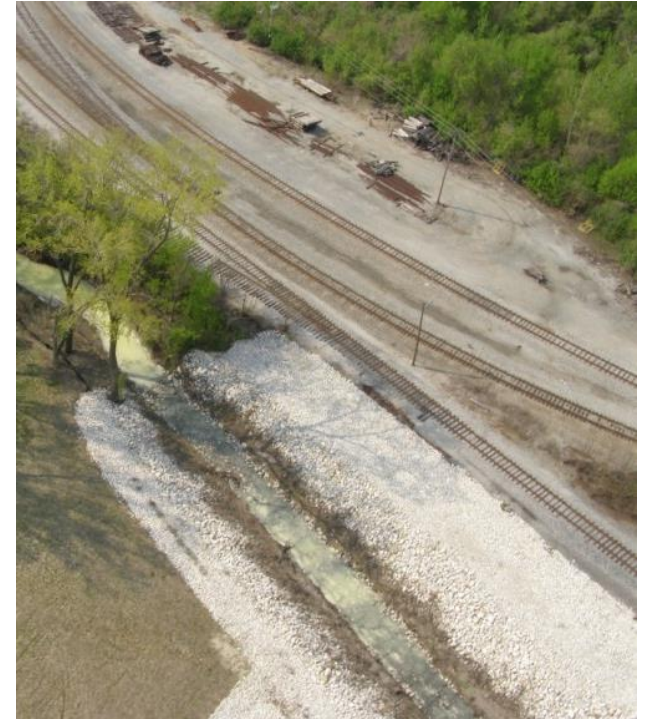
White Powder Incidents



Level B response to “white powder” involved business, FBI and U.S. Postal Service inspectors.

Affected Waterways

Ammonia in Cold Water Creek, St. Louis Co.



April 2011

Success Depends on Cooperation

- EER's mission: Stop, contain and stabilize spills/releases
- EER works with responsible party and responders to start cleanup, using professional resources.
- Cooperation among responders, contractors, agencies, consultants and business partners leads to success in cleaning up environmental emergencies.

Questions?
Skip Ricketts
636-938-7808 (W)
314-608-5656 (C)
Skip.Ricketts@dnr.mo.gov

24-Hour Spill Line
573-634-2436

